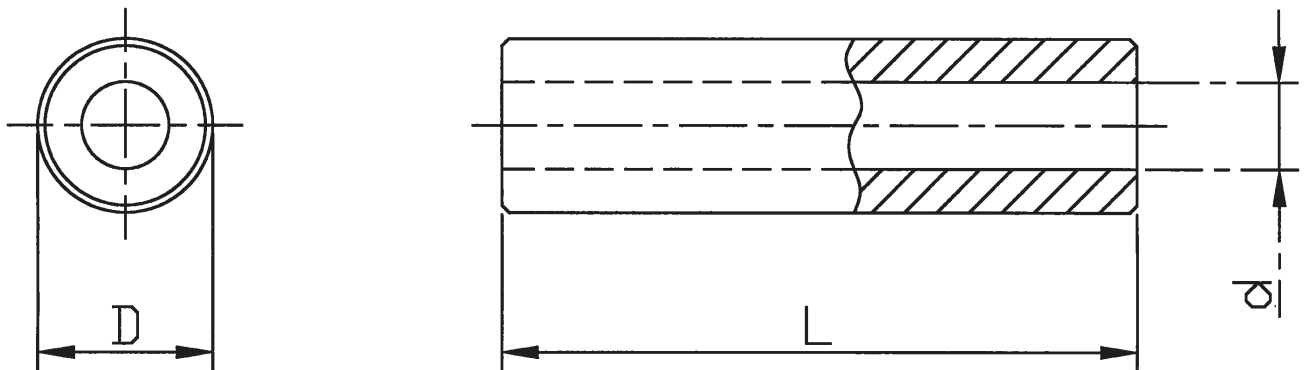


- Tolerance for length dimensions:  $\pm 0.1$  mm

- Available from stock. Delivery times for intermediate lengths and special versions upon request.



## Standard range – spacer sleeves [ Brass, nickel plated ]



Order No.	Execution	Material	Diameter D (mm)	Diameter d (mm)	Standard lengths in mm
318 / 4.3 x	DH	Brass	8.0	4.3	2, 3, 4, 5, 6, 7, 8, 9, 10, 12, 15, 18, 20, 25, 30