

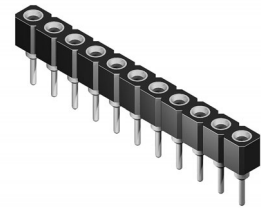
# CS10 Series 2.54mm(.100") Single in Line SIP Socket

- High reliability screw machine terminals with multiple finger contact
- Seal and prevent flux wicking

## Construction-

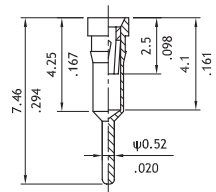
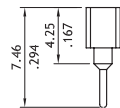
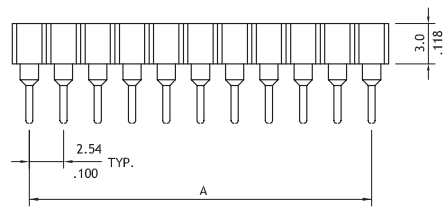
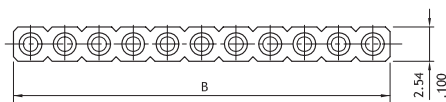
- Insulation: PPS UL 94V-0
- Contact: Gold plated Beryllium copper

Comet electronics Part. No M20S  
Comet electronics Part. No M40S



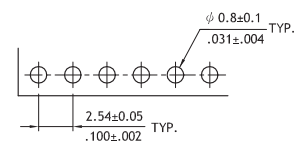
**RoHS** Compliant

Ordering code		1	2	3	4	5
		<b>C S 1 0</b>	<b>4 0</b>	<b>D</b>	<b>1</b>	<b>0 0 0</b>
1 Series No.	3 Plating code:					
2 Circuits:	D= Tin plated sleeve					
02 to 40	with 10μin Gold plated contact					
		4 Color: 1= Black				
		5 Other options:				
		000= Standard				
		*Special options Consult manufacturer				



Pin detail

$A = 2.54 * \text{No. of Spaces}$   
 $B = A + 2.44$



Recommended P.C. Board Layout