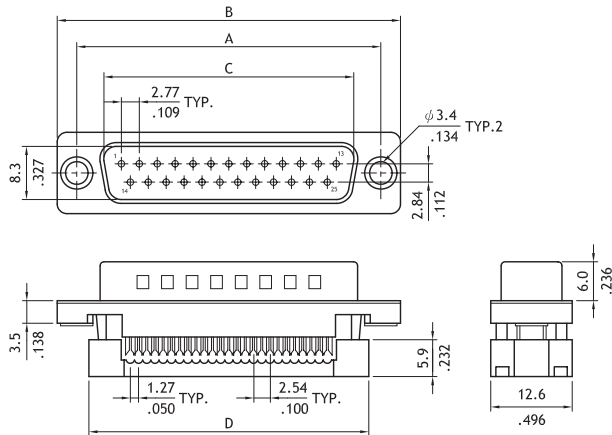
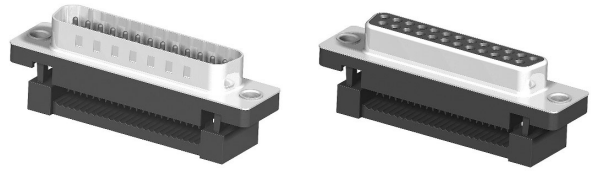


## CD91 Series Flat Cable - IDC D-Sub

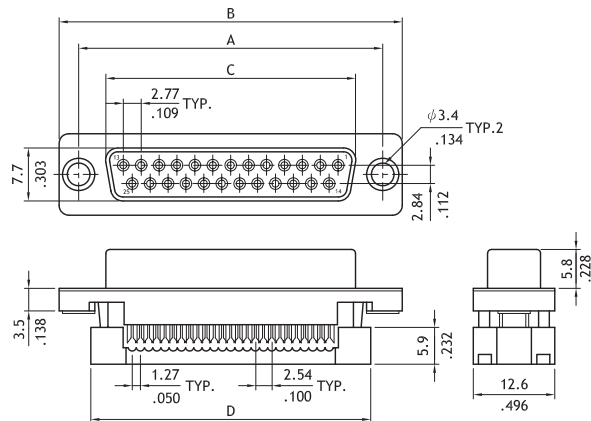
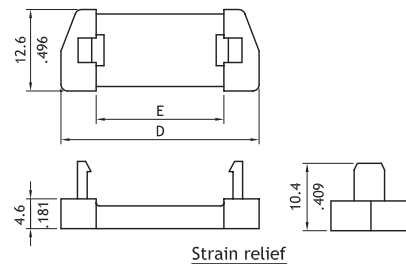
- Mate with standard D-Sub
- $\phi 3.4$ mm holes or riveted nuts insert available

**RoHS** Compliant 



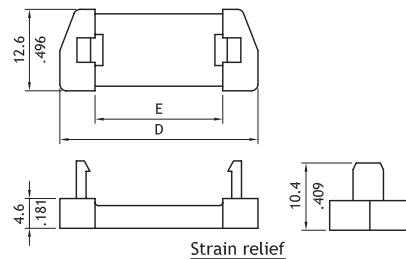
Plug Connector

Circuits	Dimension				
	A	B	C	D	E
9	25.0(.984)	30.8(1.213)	16.92(.666)	22.4(.882)	12.08(.476)
15	33.3(1.311)	39.2(1.543)	25.25(.994)	30.8(1.213)	19.7(.776)
25	47.1(1.854)	53.1(2.091)	38.96(1.534)	44.5(1.752)	32.4(1.276)
37	63.5(2.500)	69.4(2.732)	55.42(2.182)	61.4(2.417)	47.72(1.879)



Receptacle connector

Circuits	Dimension				
	A	B	C	D	E
9	25.0(.984)	30.8(1.213)	16.3(.642)	22.4(.882)	12.08(.476)
15	33.3(1.311)	39.2(1.543)	24.6(.969)	30.8(1.213)	19.7(.776)
25	47.1(1.854)	53.1(2.091)	38.3(1.508)	44.5(1.752)	32.4(1.276)
37	63.5(2.500)	69.4(2.732)	54.8(2.157)	61.4(2.417)	47.72(1.879)



## Ordering Code

**1**  
**CD 9 1**

**2**  
**2 5**

**3**  
**P**

**4**  
**A**

**5**  
**7**

**6**  
**S 0**

**1** Series No.

**2** Contacts:  
9,15,25,37

**3** Connector type:  
P= Plug  
S= Receptacle

**4** Plating code:

A= Selective Gold flash over Nickel  
\*Optional plating available but MOQ requested

**5** Insulator Color:

1= Black , 7= Blue

**6** Other options:

S0= Metal shell with  $\phi 3.4$ mm holes with S/R (Standard)

S1= Metal shell #4-40 UNC insert nuts with S/R

\*Special options consult manufacturer